

**19085**

ISTRUZIONI DI MONTAGGIO - FITTING INSTRUCTIONS - INSTRUCCIONES PARA SU MONTAJE - MONTAGEANWEISUNGEN - INSTRUCTIONS DE MONTAGE - MONTAGE INSTRUCTIES.

**MODELLI CON PREDISPOSIZIONE DELLA CASA AUTO:**

CARS WITH PRE-EXISTING FIXING POINT FROM MANUFACTURER

MODELOS CON PREDISPOSICION DEL FABRICANTE

AUTOS MIT VOM HERSTELLER VORGESEHENE BEFESTIGUNGSPUNKTE

VOITURES AVEC POINTS DE RÉPÈRE PRÉVUS PAR LE CONSTRUCTEUR

AUTO'S MET DOOR DE FABRIKANT VOORZIENE MONTAGEPUNTEN

**1**

**CITROEN:** NEW C5 (08->)

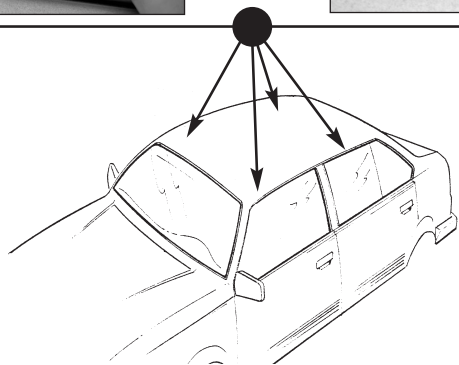
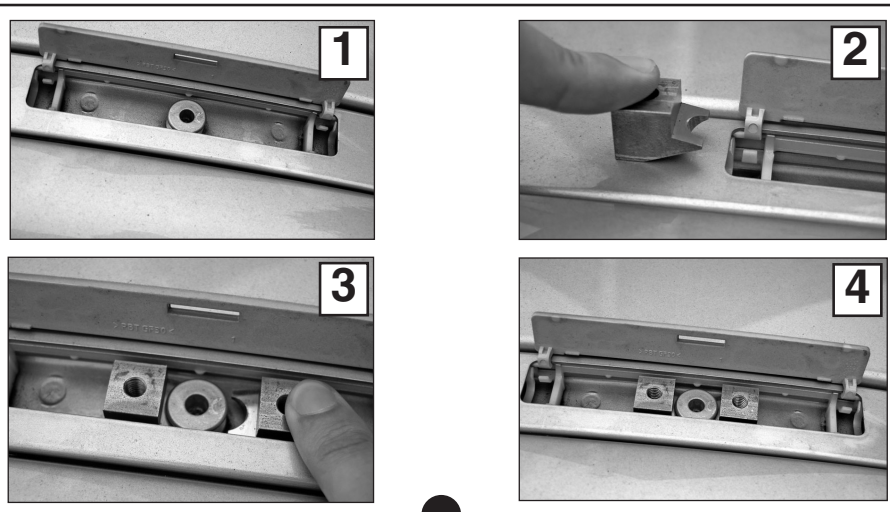
"À TROUVER SUR LE BATTANT DE LA PORTE OU  
DANS LE MANUAL TECHNIQUE DE LA VOITURE "

**CITROEN:** C6 5P

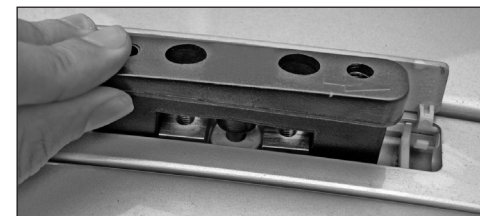
**PEUGEOT:** 207 3-5P

**PEUGEOT:** 308

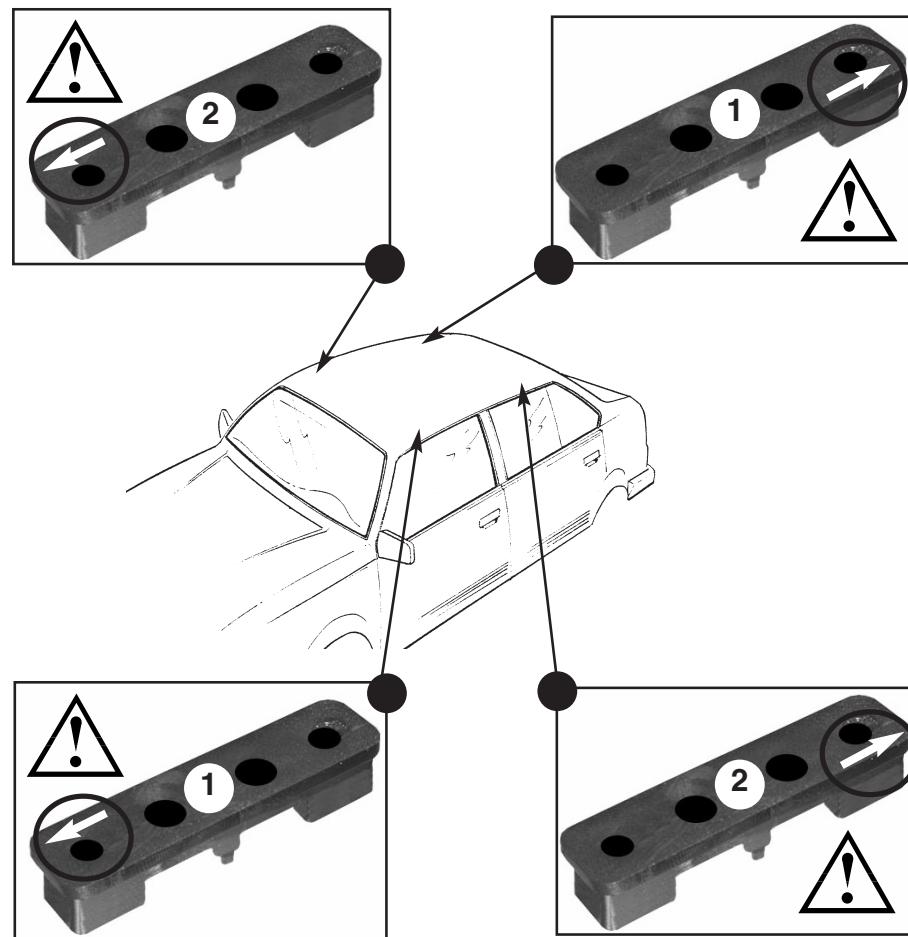
**PEUGEOT:** 407 BERLINA (05->)



**2**

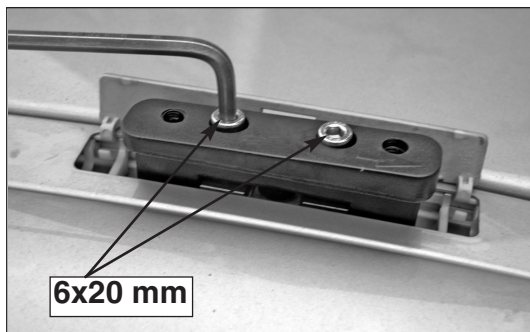
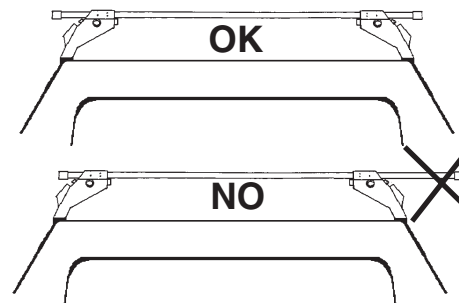


**INSERIRE**  
INSERT  
CUBRIR  
STOPFEN  
ENFILER  
BEVESTIG



**3****5 Nm**

**AVVITARE**  
TO SCREW  
APRETAR  
FESTSCHRAUBEN  
VISSER  
VASTSCHROEVEN

**6x20 mm****6****OK****NO****CENTRARE IL P. TUTTO SUL TETTO**CENTRE THE UNIVERSAL BAR  
CARRIER ON THE ROOFCENTRAR EL PORTAEQUIPAJES  
SOBRE EL TECHOLASTENTRÄGER AUF DEM DACH  
ZENTRIEREN

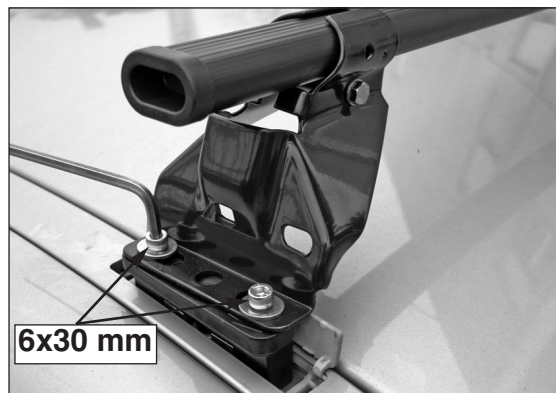
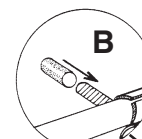
CENTRER LE PORTE-TOUT SUR LE TOIT

PLAATS DE UNIVERSELE DRAGER  
IN HET MIDDEN VAN HET DAK**4**

**SVITARE**  
UNSCREW  
AFLOJAR  
ABSCHRAUBEN  
DEVISSER  
OPENSCHROEVEN

**5****5 Nm**

**AVVITARE**  
TO SCREW  
APRETAR  
FESTSCHRAUBEN  
VISSER  
VASTSCHROEVEN

**6x30 mm****7****B****B - INSERIRE TAPPO SU VITE**

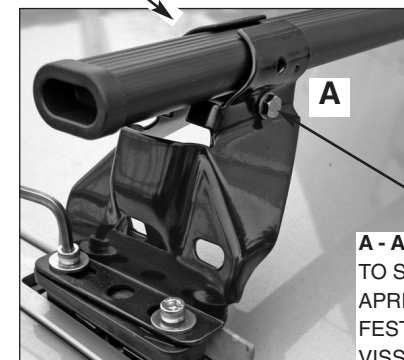
INSERT THE CAP ON THE SCREW

CUBRIR TORNILLO CON SU PLASTICO

STOPFEN AUF DIE SCHRAUBE EINSETZEN

ENFILER LE CAPUCHON SUR LA VIS

BEVESTIG DE DOP OP DE SCHROEF

**A****8 Nm****A - AVVITARE (A FONDO)**

TO SCREW (DOWN)

APRETAR (A FONDO)

FESTSCHRAUBEN

VISSER (À FOND)

VASTSCHROEVEN

